

AMSTERDAM SYMPHONY OFFICE

The Amsterdam Symphony Office comprises the new subsidiary office for an international reinsurer in the Netherlands. The office is located on the fifth floor of the prestigious Symphony complex at Zuidas in Amsterdam.

The clients requested an open plan office with an enclosed meeting room and several separate offices. Flexibility was a requirement to accommodate the company's future growth. In response to this, the design was conceived as three volumes that are strategically placed to structure different zones; each volume is characterized by a different material.

At the heart of the office is a glass volume that houses an acoustically sealed meeting room. Flexible working areas are located on either side of the glass box. The transparency of the material enables a sense of openness, allowing daylight to filter through the space from the full-height windows. Clad in teak, the entry volume houses the enclosed offices, while a white volume made from high-gloss MDF conceals the archive cabinets, simultaneously creating a semi-enclosed informal meeting space. Employees can enjoy views of the surrounds from the communal lunch and coffee area located along the façade.

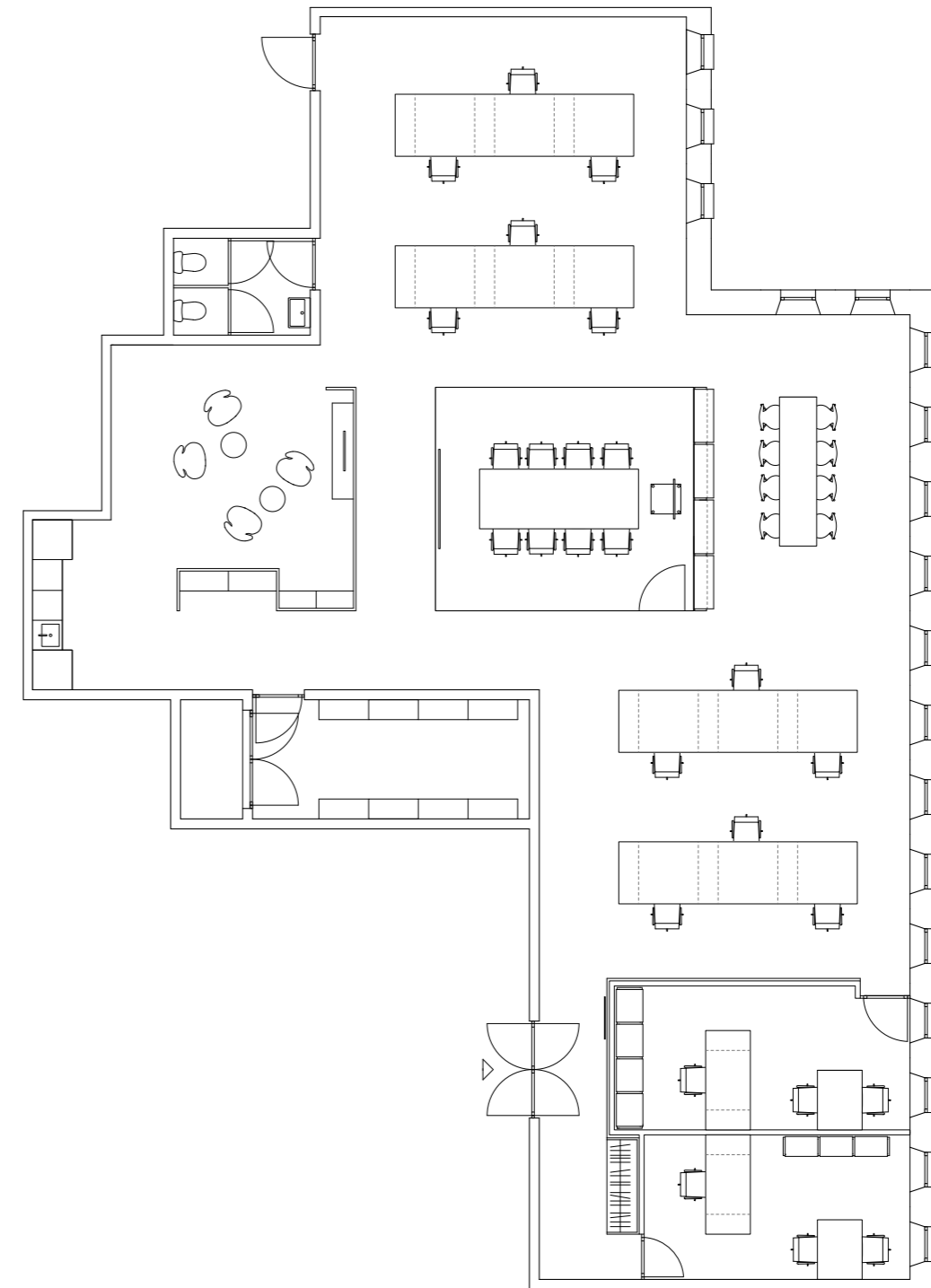
The joinery and furniture are custom made: work desks are made of black MDF while the remaining tables and cabinets are crafted from dark-coloured solid oak. The floor was finished with a durable grey coating. Through the dark finishes, high quality materials and exceptional craftsmanship, the office gains a professional feel that reflects the established and esteemed nature of the company.



open plan office



lunch and coffee corner



floor plan

Client
Undisclosed
Location
Amsterdam, Netherlands
Program
Offices
Gross Floor Area
350 m²
Status
Completed (2014)
Team
Serge Schoemaker
Beatrice Nespega
Photography
Raoul Kramer