

NAARDEN HOUSE

This project involved the renovation of a semi-detached house from the 1930s in Naarden. The challenge was to improve the internal spatial quality of this traditional house without physically altering its protected external appearance.

Our overall strategy focused on creating a greater sense of space and light throughout the house. Starting with the ground floor, we radically transformed the existing layout which comprised a series of divided, cramped rooms. A new circular routing – clustered around the stairwell – was designed to enable a flow of spaces. The elongated living room, hall and small kitchen were combined into a new spacious living and dining area while a new library occupies part of the former garage.

The new layout enables internal views in all direction. An eight-metre-long unit stretching from the living room into the kitchen and library acts as a functional spine by integrating the fireplace, storage and kitchen appliances. In the kitchen, a thin cantilevering in-situ concrete bar with integrated sink becomes the hub of the home. To enable flexible use of the kitchen, a complementary custom-designed oak dining table can be placed beside or underneath the bar.

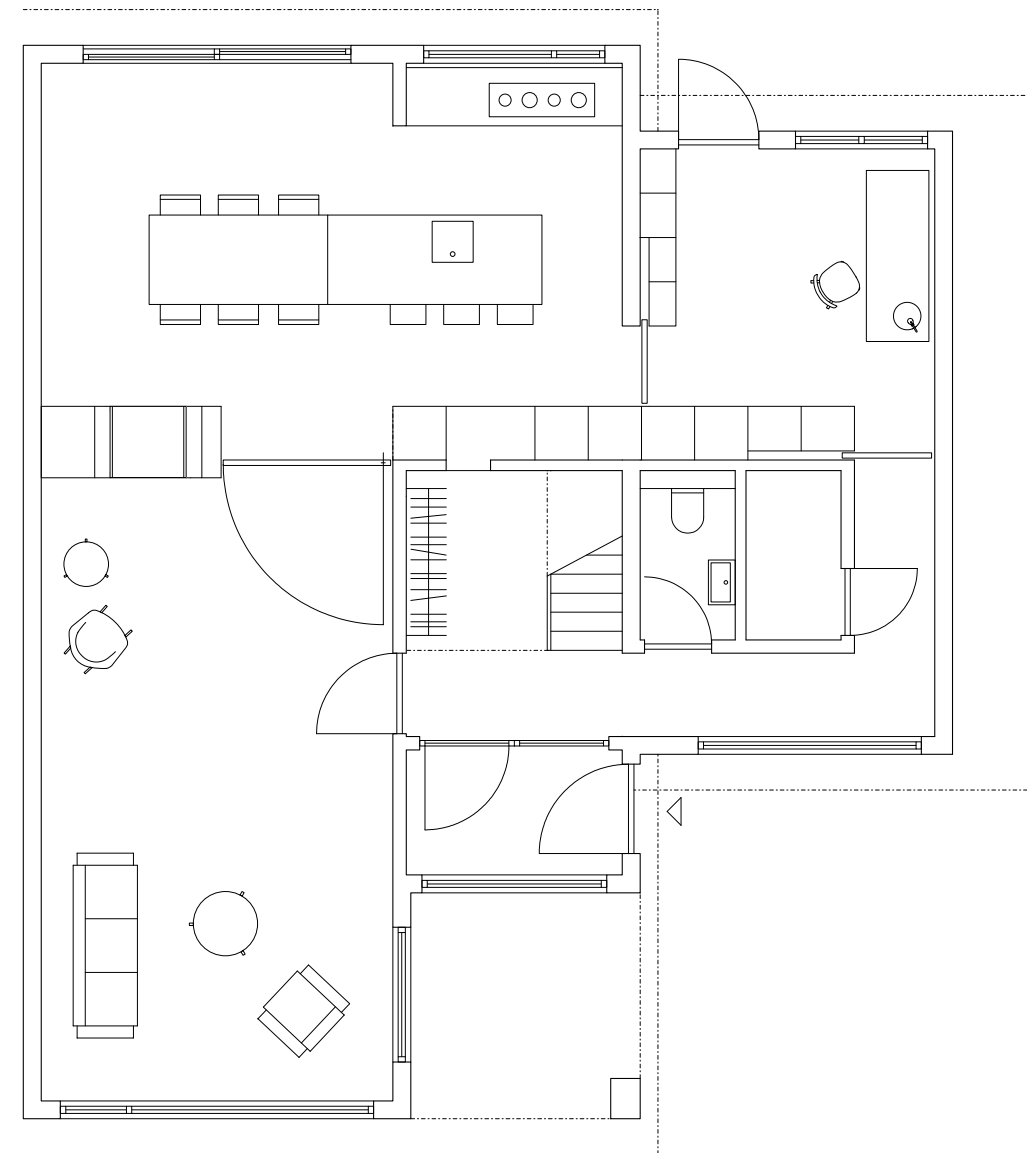
In the new library, the full height of the garage was maximised to create a voluminous feel, while the verticality of the floor-to-ceiling custom book shelves contrast the horizontal lines of the rest of the interior. The formerly disused attic gained a new function as a master bedroom with en-suite bathroom. We transformed the space by enlarging the windows, removing the internal walls and exposing the full height of the roof structure to create more space and light.



kitchen



library



ground floor plan

Client
Private
Location
Naarden, Netherlands
Program
Residential
Gross Floor Area
195 m²
Status
Completed (2013)
Team
Serge Schoemaker
Max Hart Nibbrig
Giulia Tönz
Photography
Raoul Kramer