

serge  
schoemaker  
architects

AMSTERDAM  
CANAL HOUSE

# Amsterdam Canal House

Situated in the heart of the city, this seventeenth-century corner house offers views of two Amsterdam canals. At the request of the owners, the national monument has been modernized and made more sustainable. Serge Schoemaker Architects transformed the five-floor home into a visual composition that fully enhances the historical qualities of this remarkable building.

Frequently renovated over the years, the interior of the residence had acquired a cluttered and eclectic character. Structural sagging and the tapered volume had left the house with sloping floors, walls, and windows. Moreover, the floor area was relatively small by current standards. The redevelopment therefore required customized solutions that emphasize light, air, and space.

The vision to make the new interior as spacious as possible involved creating an open floor plan, space-saving sliding doors, efficient staircases, and slender balustrades on every floor. The attic level beneath the mansard roof was completely stripped and redesigned with an open staircase and a transparent bathroom.

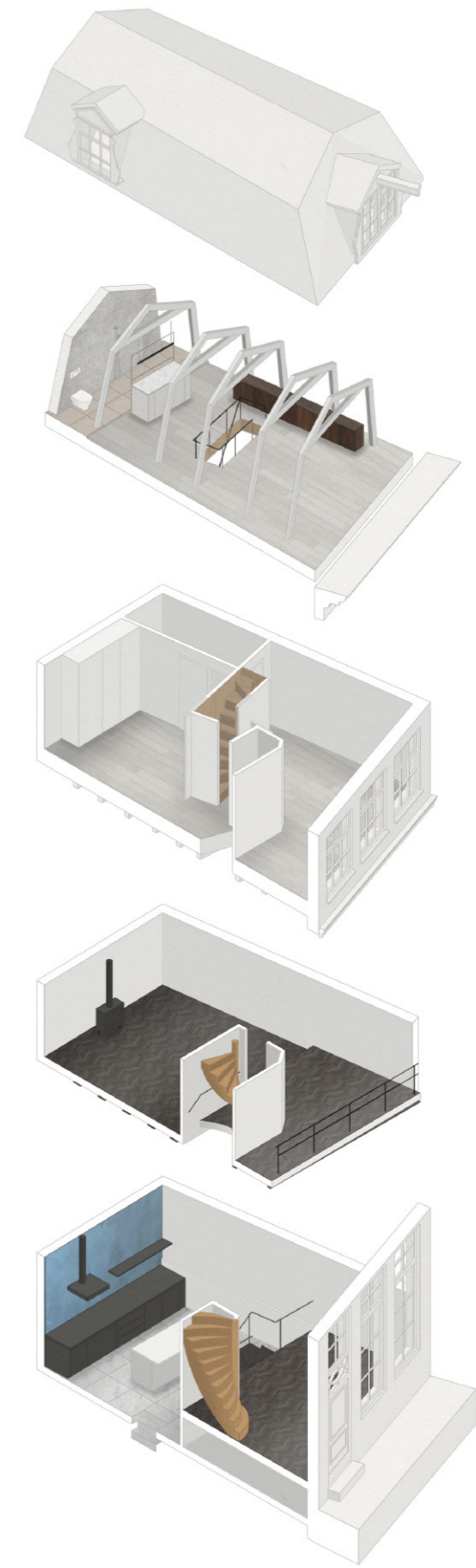
This new spaciousness accentuates the existing timber beams and trusses, as well as the floor-to-ceiling windows with glazing bars that frame views of the vibrant city. White floors and walls draw daylight deep into the home. Customized staircases and furniture create warm touches and highlight contrasts.

Details, materials, and colours are repeated consistently on all floors of the house, resulting in a visual unity in which new additions complement existing elements. The stone-like floor and wall finishes in the modern ground-floor kitchen hark back to the seventeenth century. The same concept informed the new balustrades and banisters that echo traditional ironwork.

Traditionally crafted waterproof lime plasterwork gives the kitchen and bathrooms a refined appearance. The special qualities of the plasterwork on the rear kitchen wall—relatively tall due to the split-level floor—enhance the new domestic atmosphere. The deep-blue wall appears almost like a vast painting as one enters the house.

LOCATION	Amsterdam, Netherlands
YEAR	2019-2021
STATUS	Completed
CLIENT	Private
PROJECT TEAM	Serge Schoemaker, Maiara Camilotti   Farimah Chaman Zadeh
PHOTOGRAPHY	Max Hart Nibbrig







ZONE  
alcoholverbod  
vanaf 12 uur 's ocht.  
E-11  
Tentoonstelling

no entry

MARC CHAGALL

MARC CHAGALL

WILLIGROF

88

VAVA  
VENCE



